



# University profiles 2023



UNIVERSITIES  
AUSTRALIA



**Universities Australia is the voice of Australia's universities**

As the peak body for the sector, we highlight the vast social, economic and cultural value of higher education and research to Australia and the world.

On behalf of our 39 member universities, we provide expert policy advice and media commentary on higher education.

We make submissions, develop policy across the sector, represent Australia's universities on government and industry appointed bodies, and partner with university sectors in other countries to drive bilateral and global collaborations.

We build capacity across the Australian university sector through our flagship annual conference and high-level policy workshops throughout the year. And we lift the profile of the extraordinary contributions made by university graduates and research to our society and economy.

Through Universities Australia and our subsidiary Higher Ed Services, member universities also have access to collective procurement and licensing agreements.

For more information, please visit the Universities Australia website:

**[universitiesaustralia.edu.au](http://universitiesaustralia.edu.au)**



### Vice-Chancellor and President

Professor Peter Høj AC  
08 8313 5120  
vice-chancellor@  
adelaide.edu.au

### Chancellor

The Hon Catherine  
Branson AC KC

### Contact Details

The University of Adelaide  
SA 5005  
08 8313 4455

### Website

adelaide.edu.au

### Campus Locations

- North Terrace
- Roseworthy
- Waite

At the University of Adelaide, we unite and serve those striving to change the world – and themselves – for the better. This is a place where you can make history.

Established in 1874, we're home to over 22,000 equivalent-full-time students and 3,000 staff, all working to create progress. Ours is a university of outstanding quality – ranked 88th in the world\* – in the heart of one of Australia's most liveable cities†.

### Relentlessly progressive

Adelaide has always broken new ground. We were Australia's first university to welcome female students. The first offering science and business degrees. The first with a conservatorium of music.

Among those who've studied, taught, or conducted research here are Australia's first: female prime minister; space-walking astronaut; Indigenous Rhodes Scholar; and female Supreme Court judge and state governor. Not to mention five Nobel Prize winners.

### Exceptional research and education

As a member of Australia's prestigious Group of Eight research-intensive universities, we're rising to global challenges with research universally rated world-standard or above^.

In fact, our output is recognised as 'well above' world standard in 41 distinct areas. These range from space sciences, materials engineering and AI, to cardiorespiratory medicine, crop production and environmental science.

As a teaching university, we're ranked among the top 100 globally in 23 subject areas‡. In 10 – including computer science, dentistry and civil engineering – we're top-50.

We also lead our state in graduate employability\*\*. Our degrees combine deep discipline knowledge with broad, transferable skills, ensuring graduates are well prepared for multidimensional careers in the future workforce.

\*Times Higher Education World University Rankings, 2023. †Economist Intelligence Unit, 2022. ^Excellence in Research Australia, 2018 (the most recent assessment date). ‡Total unique entries across QS World University Rankings by Subject (2022), Times Higher Education (2023), and Academic Ranking of World Universities by Subject (2022). \*\*QS Graduate Employability Ranking, 2022.



### Vice-Chancellor and President

Professor Zlatko Skrbis  
02 9739 2930  
zlatko.skrbis@acu.edu.au

### Chancellor

The Hon Martin Daubney  
AM KC

### Contact Details

40 Edward Street  
North Sydney NSW 2060  
02 9739 2368

### Website

acu.edu.au

### Campus Locations

- Ballarat
- Blacktown
- Brisbane
- Canberra
- Melbourne
- North Sydney
- Strathfield
- Rome, Italy

An Australian Catholic University (ACU) education builds on the Catholic understanding of faith and reason working together in pursuit of knowledge and promotion of human dignity and the common good.

An ACU education seeks to transform lives and communities. Students are challenged to look beyond the classroom, solve real-world problems, develop their own search for meaning, and cultivate strong professional ethics. They are invited to stand up for people in need and causes that matter.

ACU is open to all. As is common with great Catholic institutions the world over, the university is inclusive and supportive of everyone, every day – regardless of their faith or tradition.

ACU is a young university making a serious impact. Ranked in the top two per cent of universities worldwide¹ and in the top 10 Catholic universities², ACU is also first in Australia for graduate employment³. The university has seven campuses around Australia, a campus in Rome, Italy, and an online campus – ACU Online.

Opportunities for personal and professional growth are critical to ACU. This is a university of service – so much so that it is built into the curricula. All ACU courses offer work placements, internships, or volunteering opportunities.

1. Times Higher Education World University Rankings 2023. Percentage calculated as ACU's world rank as a proportion of the total number of universities in the world: *International Handbook of Universities 2019*, Palgrave MacMillan.

2. Times Higher Education World University Rankings 2023, ranked IFCU members

3. Graduate Outcomes Survey – Longitudinal 2022, medium-term, full-time employment 2020 – 2022 for domestic undergraduate students



**Vice-Chancellor  
and President**

Professor Brian P. Schmidt  
AC FAA FRS  
02 6125 2510  
vc@anu.edu.au

**Chancellor**

The Hon Julie Bishop

**Contact Details**

Canberra ACT 2601  
02 6125 5111  
enquiries@anu.edu.au

**Website**

anu.edu.au

**Campus Locations**

- Main Campus (Acton)
- Canberra Hospital, Clinical School
- Kioloa Coastal Campus
- Mt Stromlo Observatory
- North Australia Research Unit
- Siding Spring Observatory

Founded in 1946, in a spirit of post-war optimism, our role was to help realise Australia's potential as the world recovered from a global crisis and that vision has been our mission ever since.

Today, we work not only to ensure our national prosperity, but to help Australia tackle the complex challenges facing humanity, like the climate crisis and global pandemics.

We are an inclusive community open to all people who have the talent and passion to succeed, regardless of their background. We seek to reflect our nation and our region.

Connections are important to us – be they to people or to country. We connect both locally, where our ties to the Australian Government and policymakers enable our researchers to help shape national policy, and on the international stage, where our trusted experts act as a conduit for Australian contribution to the global community.

Our campus is a meeting place for our community to converge and collaborate, as First Nations people have done on these lands for thousands of years.

What we do can be difficult work, but it's work we proudly do – because connecting talented people with diverse perspectives, equipping and encouraging them to address the most complex of tomorrow's problems, and ensuring Australia's future is not just our approach – it's also our role and responsibility as Australia's national university, and it's a responsibility from which we'll never waver.



**Vice-Chancellor  
and President**

Professor Tim Brailsford  
07 5595 1050  
vc@bond.edu.au

**Chancellor**

The Hon Dr Annabelle  
Bennett AC SC

**Contact Details**

14 University Drive  
Robina QLD 4226  
07 5595 1111  
information@bond.edu.au

**Website**

bond.edu.au

**Campus Location**

- Gold Coast

Dedicated to a deliberately different, personalised approach to education, Bond University is Australia's leading independent, not-for-profit university. Bond is driven by a desire to produce standout graduates with the skills to transform industries and lead the charge across sectors.

Bond students receive a unique educational experience founded on smaller class sizes, abundant opportunities for connection and professional development, and accelerated degrees that put them at the forefront of a rapidly changing career landscape. Throughout their time at Bond, students also have access to world-class academics with real industry experience who are personally invested in their personal and professional growth.

**Number one for student experience**

Bond has been ranked number one in Australia for student experience for the past 17 years, according to the 2023 Good Universities Guide. This also encapsulates five-star ratings in every student experience category: student-teacher ratio, learner engagement, learning resources, skills development, student support, and teaching quality.

**Employable, future-focused graduates**

Bond is proud to produce highly employable graduates with global outlooks and relevant, transferrable workplace skills. One of the ways the university accomplishes this is through a strong employability focus embedded into every degree.

Students have access to unlimited lifelong career guidance through the Career Development Centre, which can help with setting up internships and work experience, provide industry engagement opportunities, and even interview and resume writing tips. There's also the Beyond Bond professional development program, the Core Curriculum – in which all undergraduate students learn key 'soft skills' such as leadership, communication and critical thinking – and the co-curricular entrepreneurship program, Transformer.





### Vice-Chancellor and President

Professor Paddy Nixon  
02 6201 5000  
ovc@canberra.edu.au

### Chancellor

Professor Tom Calma AO

### Contact Details

University of Canberra  
Bruce ACT 2601  
02 6201 5111

### Website

canberra.edu.au

### Campus Locations

- Canberra
- Sydney
- Melbourne
- Queensland
- China
- Bhutan
- Vietnam
- Singapore

The University of Canberra (UC) is embedded in the fabric of Canberra, Australia's capital, and this shapes our mission – fostering innovation, meeting community needs, and equipping future leaders with professional careers and lifelong connections.

UC takes pride in its unique focus on community health, and drives exciting new frontiers in science and technology.

We live and breathe sport, it is the heart of our community, and we provide a home for Canberra's creative industries.

For over 50 years, UC has been instrumental in building an education workforce for the advancement of future generations.

Our expertise in business, government and legal frameworks supports the ACT region's economic growth, the nation's political acumen and the overall evolution of law.

UC ensures our students' success through progressive teaching, impactful research, and strong ties with industry. Our students enjoy immersive learning, that incorporates real-world experience through internships and placements, that deliver employability outcomes.

Our graduates are set up for stellar career opportunities, endorsed by our number one ranking for full-time employment, teaching quality and starting salaries in Canberra. (Good Universities Guide, 2023).

UC is ranked in the top 20 of the Times Higher Education (THE) Young University World Rankings (2022), and number one globally for reducing inequalities in the THE Impact Rankings (2022).

As we continue to expand our campus, UC has maintained its distinctive character for over 30 years. Our location in Australia's capital has shaped UC as progressive and dynamic – connected to the community and committed to building a sustainable, prosperous future.



### Vice-Chancellor and President

Professor Nick Klomp  
07 4930 9752  
vc-cquniversity@cqu.edu.au

### Chancellor

Mr Graeme Innes AM

### Contact Details

CQUniversity Australia  
554-700 Yaamba Road  
Norman Gardens QLD 4701  
07 4930 9777  
communicate@cqu.edu.au

### Website

cqu.edu.au

### Campus Locations

- Adelaide
- Brisbane
- Bundaberg
- Cairns
- Emerald
- Gladstone
- Mackay
- Melbourne
- Perth
- Rockhampton
- Sydney
- Townsville

Originally founded in Rockhampton in 1967, as the Queensland Institute of Technology (QIT) Capricornia, CQUniversity Australia was granted full University status in 1992 and now has more than 30,000 students studying online and on-campus across Australia.

CQUniversity is proud to be recognised as Australia's most inclusive university with some of the highest ratios of students from disadvantaged, mature age, Aboriginal and Torres Strait Islander, and first-in-family backgrounds.

It is this strong focus on participation and accessibility, that has seen CQUniversity firmly establish itself as one of the largest universities based in regional Australia. CQUniversity is Queensland's only dual sector university and is also a pioneer in the delivery of distance and online education.

After more than half a century working with stakeholders in regional Australia, CQUniversity is now a renowned research institution in several key disciplines and the benchmark leader for how universities should engage and collaborate with communities and industry. It is also recognised by Social Traders as Australia's only certified social enterprise university.



#### **Vice-Chancellor and President**

Professor Scott Bowman AO  
08 8946 6040  
vc@cdu.edu.au

#### **Chancellor**

The Hon Paul Henderson AO

#### **Contact Details**

Ellengowan Drive  
Casuarina NT 0909  
08 8946 6666  
courses@cdu.edu.au

#### **Website**

cdu.edu.au

#### **Campus and Centre Locations**

- Casuarina (Darwin)
- Alice Springs
- Palmerston
- Katherine
- CDU Sydney
- CDU Darwin Waterfront
- Nhulunbuy
- Jabiru
- Tennant Creek
- Yulara

With our home and our heart in the Northern Territory, we embrace the inclusive, resilient, and courageous spirit of the Territory. We are a deeply connected university, working in close partnership and collaboration with First Nations peoples, our communities, industry and government.

We are proud to be Australia's first dual-sector university and the largest training provider in the Northern Territory.

Our locations span the capital cities of Darwin, Brisbane, and Sydney to the regional hubs of Alice Springs, Palmerston, Katherine and the remote locations in Jabiru, Tennant Creek and Yulara, and on Country – in community, with the community.

We're committed to working together to achieve the social, cultural and economic aspirations of First Nations people for the betterment of all Australians. Each year CDU teaches over 4,000 First Nations students and we offer unique courses in Indigenous culture, history, policy and language that are critical to advancing Indigenous knowledges in Australia.

Works are progressing in Darwin's CBD on the \$250 million Education and Community Precinct featuring a modern new CDU campus scheduled to open in 2024.

We excel in flexible study options and are a world leader in delivering education to remote communities with a focus on ensuring far-reaching access to education. Our training and degree education is delivered by outstanding educators in a way that is accessible and meaningful.

CDU research is recognised as excellent in Indigenous and tropical health, environmental science and public policy. Our research portfolio has real-world impact, within and beyond our unique location.



#### **Vice-Chancellor and President**

Professor Renée Leon PSM  
02 6338 4209  
vc@csu.edu.au

#### **Chancellor**

Dr Michele Allan

#### **Contact Details**

Panorama Avenue  
Bathurst NSW 2795  
1800 275 278

#### **Website**

csu.edu.au

#### **Campus Locations**

- Albury-Wodonga
- Bathurst
- Canberra
- Dubbo
- Goulburn
- Orange
- Parramatta
- Port Macquarie
- Wagga Wagga

At the heart of Charles Sturt University's approach to education is the Wiradjuri phrase yindyamarra winhanganha – 'the wisdom of respectfully knowing how to live well in a world worth living in'.

Charles Sturt is Australia's leading regional university, offering more than 250 courses delivered on a network of regional campuses in Orange, Bathurst, Wagga Wagga, Dubbo, Port Macquarie and Albury-Wodonga, and specialist campuses in Canberra, Goulburn and Parramatta. Charles Sturt is also Australia's most experienced online university and the nation's online university of choice.

Charles Sturt has a proud history of partnering with industry and businesses to benefit our students and the local community.

#### **Students**

Charles Sturt has been Australia's leading university for undergraduate full-time employment for the last six years, as well as boasting an outstanding record of graduating First Nations students and those from rural and remote backgrounds.

The university's strong links to industry connect students with relevant, real-world experience throughout their courses.

#### **Research**

In 2022, Charles Sturt established three research institutes – The Gulbali Institute integrating agriculture, water and environment research; the Rural Health Research Institute funded by the Commonwealth Government, and the Artificial Intelligence and Cybersecurity Institute – to deliver outcomes that foster prosperous and resilient regional communities.

#### **People**

Charles Sturt is a recognised Employer of Choice for Gender Equality with the Workplace Gender Equality Agency, three years running.

#### **Social responsibility**

Charles Sturt is a leader in sustainable practices, becoming the first Australian carbon neutral university and ranking in the top five per cent of universities globally in the Times Higher Education Impact Rankings in 2022.



#### **Vice-Chancellor**

Professor Harlene Hayne  
vc@curtin.edu.au

#### **Chancellor**

Dr Andrew Crane

#### **Contact Details**

Kent Street  
Bentley WA 6102  
08 9266 9266

#### **Website**

curtin.edu.au

#### **Campus Locations**

- Perth
- Kalgoorlie
- Malaysia
- Singapore
- Dubai
- Mauritius

Curtin University is a vibrant young university with a growing global presence and dedication to making a positive difference for people and our planet – through all our teaching, research and engagement activities.

Ranked among the top one per cent of universities worldwide\*, Curtin is known for embracing innovation, for building strong partnerships with industry and communities, and for graduates who are career-ready and keen to create positive change.

#### **Our student experience**

Curtin focuses on providing an immersive learning experience with industry-connected and international study opportunities for our students, in an environment that promotes diversity and inclusion. These approaches are why Curtin is seen as a progressive university, with the culture and the mindset to drive economic and social benefits that transform lives and the future.

#### **Research and innovation**

Curtin excels in several research fields and leads research centres, major industry collaborations and international endeavours such as the Murchison Widefield Array radio telescope. Named as Australia's first Trailblazer university, we recently gained government funding to develop value-chain capabilities for hydrogen resources and in-demand metals such as lithium, in partnership with universities and companies across Australia.

We've also developed a pipeline of support to transform ideas into real-world benefits. Over the past 20 years, this 'Curtinnovation' pipeline has launched many homegrown Australian products and services. From new methods for assessing pain in patients with dementia, to digital resources that help schools and households reduce their carbon footprint, the diversity of our start-ups reflects the core role of future-focused universities.

\* ARWU 2022



#### **Vice-Chancellor and President**

Professor Iain Martin  
03 5227 8501  
vc@deakin.edu.au

#### **Chancellor**

Mr John Stanhope AM

#### **Contact Details**

Head Office, Geelong  
Waterfront Campus,  
Locked Bag 20001,  
Geelong, VIC 3220  
03 5227 1100

#### **Website**

deakin.edu.au

#### **Campus Locations**

- Geelong Waterfront
- Geelong Waurin Ponds
- Melbourne Burwood
- Warrnambool

Established in 1974, Deakin is one of Australia's most progressive universities, leading in the innovative use of digital technologies and online learning, and blending this capability across its distinctive campus precincts in Melbourne, Geelong and Warrnambool.

#### **'Balanced excellence' in education and research**

Deakin has achieved a balance of high-quality research with an education experience that is consistently rated as one of the best in the country.

For 12 consecutive years, Deakin has been rated number one for student satisfaction in Victoria. Deakin provides opportunities for learners at all stages of their lives and careers, enabling flexible and non-traditional pathways into education.

The university's four faculties offer a comprehensive range of courses across the arts, science, sport, nutrition, architecture, business, law, medicine, optometry, engineering, nursing, psychology and teaching.

Deakin has a thriving research culture known for its multidisciplinary collaborations and is rated in the top one per cent of universities in the world.

#### **Community, government and industry engagement**

Deakin emphasises mutually beneficial partnerships and real-world impact across its areas of strategic priority: health and wellbeing, smarter technologies, sustainability, society and culture, and building safe and secure communities.

Deakin's industry precincts provide an important link between technological innovation and successful industry outcomes.

#### **A global university**

Deakin is global in its outlook, activities and impact, with partnerships in 57 countries and offices in China, India, Latin America, Europe, Indonesia, Malaysia, Vietnam, Pakistan and Singapore.

Over 325,000 alumni live and work across the globe and their achievements are the best measure of Deakin's success.





### Vice-Chancellor and President

Professor Steve Chapman  
08 6304 2205  
vc@ecu.edu.au

### Chancellor

Ms Denise Goldsworthy AO

### Contact Details

270 Joondalup Drive  
Joondalup WA 6027  
08 6304 0000

### Website

ecu.edu.au

### Campus Locations

- Joondalup
- Mount Lawley
- South West

Edith Cowan University (ECU) provides the ideal learning environment for people who want to graduate world ready.

Located in Western Australia, our industry-relevant teaching and research, supportive study environment and award-winning facilities enable ECU students to do more than just survive in this world – they thrive in it.

ECU courses are developed in consultation with industry, and teaching staff have extensive industry experience and networks. It's why ECU students can expect work integrated learning placement opportunities, fieldwork, practicums and networking events as part of their studies.

This approach has been rewarded with five-star ratings for teaching quality over the past 16 years, along with consistently high ratings for overall education experience, skills development, student support and learning resources, as reported in the Good Universities Guide.

ECU's world-class research focuses on working with communities, business and government organisations to solve real-world problems in Australia and beyond.

The university was named after Edith Dircksey Cowan, the first woman to be elected to an Australian Parliament. She believed that education was the key to growth, change and improvement in society.

### At a glance

ECU has more than 30,000 undergraduate and postgraduate students, including international students from 100 countries.

Our eight schools collectively deliver a diverse range of courses across arts and humanities, business and law, education, engineering, medical and health sciences, nursing and midwifery, science and the Western Australian Academy of Performing Arts.

Courses are offered across three campuses – ECU Joondalup and ECU Mount Lawley in metropolitan Perth and ECU South West in Bunbury, as well as online study options.



### Vice-Chancellor and President

Professor Duncan Bentley  
vc@federation.edu.au

### Chancellor

Mr Terry Moran AC

### Contact Details

University Drive  
Mt Helen VIC 3350  
1800 333 864  
info@federation.edu.au

### Website

federation.edu.au

### Campus Locations

- Ballarat
  - Mt Helen
  - SMB – Arts Academy and Federation TAFE
- Berwick
- Brisbane
- Gippsland
- Wimmera

At Federation, we aim to make a real difference to the lives of every student who walks through our doors, and to the communities we help build and are proud to be part of. Through our founding institutions we have a history dating back 150 years, and this coupled with our modern approach to teaching and learning within our higher education and TAFE offerings makes us one of Australia's leading regional universities.

Today, we are proud to have more than 18,500 domestic and international students and 118,000 alumni across Australia and the world. Into our supportive, inclusive and thriving community, we welcome people from all backgrounds and cultures.

Federation is Australia's first co-operative university, where by 2025 all programs will be co-designed, co-developed and co-delivered in partnership with industry, with embedded extended workplace learning. Four foundation co-op courses will be on offer in 2023; Bachelor of Business, Bachelor of IT, Bachelor of IT (Professional Practice) and Bachelor of Visual Arts.

We are rated by the Good Universities Guide as the number one university in Australia for first generation student enrolment and number one in Victoria for undergraduate starting salary and social equity. The research conducted at Federation University is world class with Clinical and Health, Education, Life Sciences, Psychology, Social Sciences and Business and Economics included in the Times Higher Education (THE) Subject rankings for 2022. We are rated in the top 250 THE Young Universities worldwide. Federation drives regional economic growth and builds our communities. Our graduates thrive because Federation is deeply engaged with industries and employers.





### **Vice-Chancellor and President**

Professor Colin Stirling  
08 8201 2101  
colin.stirling@flinders.edu.au

### **Chancellor**

Mr Stephen Gerlach AM

### **Contact Details**

GPO Box 2100  
Adelaide SA 5001  
08 8201 3911  
admissions@flinders.edu.au

### **Website**

flinders.edu.au

### **Campus Locations**

- Bedford Park (main campus)
- Victoria Square - Adelaide CBD
- Tonsley

### **Northern Territory**

- Darwin
- Alice Springs
- Katherine
- Nhulunbuy

### **Regional South Australia**

- Riverland
- Greater Green Triangle

Flinders University is an innovative, industry collaborative and progressive place to learn, research and thrive.

Ranked in the top two per cent of world universities, we are South Australia's number one for undergraduate learner engagement and student support, full time post graduate employment and postgraduate starting salary.

A trailblazer in contemporary education and a source of enterprising graduates equipped to change the world, we offer undergraduate and postgraduate courses for almost 26,000 students – nearly 5,000 of whom are international students from more than 90 countries. Our main campus at Bedford Park features on-site accommodation for 560 students.

Uniquely we offer innovation and enterprise studies to every student, supported by global entrepreneurship leader the Flinders New Venture Institute, and Australia's only joint MBA PhD.

Some 90 per cent of our research is at or above world class. Strengths include biomedical and clinical sciences, culture, policy and society, health and human behaviour, molecular science and technology, defence, engineering, water, and environment.

Our main campus is expanding with a landmark Health and Medical Research Building underway at our Flinders Village development, while a new vertical CBD campus will be operational in 2024.

Flinders University's footprint reaches from Adelaide to Darwin. Committed to inclusion and equity, our Northern Territory Medical Program supports students to complete a Flinders Doctor of Medicine on Country in Darwin, Alice Springs, Katherine and Nhulunbuy. Rural medical, nursing, and allied health courses are identical in structure to those in Adelaide.

Globally focused, we deliver joint courses with leading universities in China, Hong Kong, Malaysia, Singapore, and Indonesia.



### **Vice-Chancellor and President**

Professor Carolyn Evans  
07 5552 8178  
vc@griffith.edu.au

### **Chancellor**

The Hon Andrew Fraser

### **Contact Details**

Parklands Drive  
Southport QLD 4222  
07 5552 8800

### **Website**

griffith.edu.au

### **Campus Locations**

- Gold Coast
- Logan
- Mt Gravatt
- Nathan
- South Bank

For almost 50 years, Griffith University has been working to create a brighter future for all.

It pioneered degrees in fields such as modern Asian studies and environmental science, and has been committed to inclusivity, social justice and sustainable practices since it first opened its doors.

In service of its dedication to a better tomorrow, Griffith's teaching and research draws together a network of disciplines and partners working to solve today's most significant social, cultural and environmental challenges.

The University offers more than 200 industry-relevant undergraduate, postgraduate and research degrees. Studying at Griffith provides unique, global opportunities in business, medicine, dentistry and health, education, law, sciences, humanities, and the creative arts. Across these fields, Griffith graduates are known for being ethically sophisticated and socially engaged.

Ranked in the top two per cent of universities worldwide, the University features prominently in national teaching awards and citations. Counted among the world's top 300 by several major annual university rankings, Griffith also rates highly as a young university, appearing regularly in the QS Top 50 Under 50 university rankings and Times Higher Education Young University Rankings.

In the most recent Excellence in Research for Australia (ERA) results, Griffith was rated at world standard or above in 59 specific fields of research, 20 of which were rated at the highest possible standard. Although its people and projects are diverse, the University is unified by its strong values, collaborative culture, and belief that its activities should benefit people everywhere.



**Vice-Chancellor  
and President**

Professor Simon Biggs  
07 4781 4165  
vc@jcu.edu.au

**Chancellor**

Mr William Tweddell

**Contact Details**

1 James Cook Drive  
Douglas 4814  
07 4781 4111  
study@jcu.edu.au

**Website**

jcu.edu.au

**Campus Locations**

- Cairns
- Singapore
- Townsville

James Cook University is unique among Australian universities, woven into the intellectual, economic and social fabric of its tropical locations.

JCU is defined by the tropics. Its main campuses are in the heart of the tropics – Cairns, Singapore and Townsville. The campuses are complemented and extended by regional and remote study centres and research stations. JCU's Australian campuses and field stations are located near the World Heritage-listed Great Barrier Reef Marine Park and the rainforests of the Wet Tropics region. This unique environment attracts students from around the world.

JCU plays a key role in preparing the professional workforce for northern Australia, and the university offers a comprehensive suite of professionally accredited programs including medicine, dentistry, pharmacy, physiotherapy, occupational therapy, speech therapy, veterinary sciences, psychology, nursing, sport and exercise science, engineering, law, education, and a range of programs in business, science, social science and humanities.

JCU is ranked among the world's top 400 universities (Academic Ranking of World Universities). The university has an international reputation for the quality of its teaching and research, with recognised strengths in environmental science and management; coral reef science, ecology, and fisheries sciences; geology; evolutionary biology; organic and inorganic chemistry; oceanography; physical geography and environmental geoscience; medical microbiology, tropical health and medicine, vector-borne diseases; immunology; archaeology; and linguistics.

JCU is home to more than 20 major research centres and institutes, including the ARC Centre of Excellence for Coral Reef Studies, The Cairns Institute and the Australian Institute of Tropical Health and Medicine.



**Vice-Chancellor  
and President**

Professor John Dewar AO  
03 9479 2000  
vc@latrobe.edu.au

**Chancellor**

The Hon John Brumby AO

**Contact Details**

Plenty Road  
Bundoora VIC 3086  
03 9479 1111

**Website**

latrobe.edu.au

**Campus Locations**

- Albury-Wodonga
- Bendigo
- Melbourne (Bundoora)
- Melbourne (Collins St)
- Mildura
- Shepparton
- Sydney

For over 50 years, La Trobe University has been transforming people and societies.

Ranked in the top one per cent of universities worldwide, we're addressing the major issues of our time. Proudly, all our broad areas of research are rated 'at', 'above' or 'well above world standard', and our graduates are second in Victoria for overall employer satisfaction.

We embrace the power of equality and diversity and believe in a student experience closely aligned with industry.

Our focus on social impact and inclusivity is why we're ranked fourth globally for our overall contribution to the UN's Sustainable Development Goals. This includes being first in Australia for gender equality and fifth internationally for our research in disease, health and healthcare areas.

Across all seven of our campuses, we're committed to ensuring our students, researchers and partners remain at the forefront of innovation and technology. We aim to encapsulate that in our upcoming \$5 billion University City of the Future at Bundoora Campus.

We have an eye firmly set on the future and we're making impact today.



**Vice-Chancellor  
and President**

Professor S. Bruce Downton  
02 9850 7440  
vc@mq.edu.au

**Chancellor**

Dr Martin Parkinson AC PSM

**Contact Details**

Wallumattagal Campus  
North Ryde NSW 2109  
02 9850 7111

**City Campus, Sydney**

Level 24  
123 Pitt Street  
Sydney NSW 2000  
02 9234 1700

**Website**

mq.edu.au

**Campus Locations**

- Wallumattagal Campus, North Ryde
- City Campus, Sydney

**A university powered by human collaboration**

Macquarie University is ranked among the top one per cent of universities in the world. Since our foundation nearly 60 years ago, we've aspired to be a different type of university – one focused on fostering collaboration between students, academics, industry and society. As a collective, we're advancing world-class theoretical thinking and translating it into real-world solutions.

**Where collaboration meets innovation**

Macquarie's Wallumattagal Campus is uniquely located in the heart of Australia's largest innovation district. With more than 300 companies located around the campus, our 45,000 students can tap into career-boosting industry connections, while our 3,000 staff can access research and innovation opportunities with world-leading organisations.

**Expanding the frontiers of knowledge**

Macquarie has an enviable reputation for research and teaching excellence. One hundred per cent of our research is rated at world standard or above; we're ranked among the top 10 universities in Australia in many research disciplines; and three of our subjects are ranked among the top 50 globally and 11 among the top 100.

**A proud tradition of innovating**

Macquarie has a robust record of innovation. We pioneered the technology that underpins Wi-Fi, developed the first synthetic funnel-web spider antivenom and designed a sterilisation technique that combats fruit flies. Today, we're focused on finding cures for motor neurone disease, Parkinson's disease and dementia.

**Building successful graduates**

Macquarie's pioneering approach to teaching and learning is built around a connected community: students are considered co-creators in their learning experience, while their degrees are linked to the latest research discoveries.



**Vice-Chancellor**

Professor Duncan Maskell  
03 8344 6134  
vc@unimelb.edu.au

**Chancellor**

Mr Allan Myers AC KC

**Contact Details**

Grattan Street  
The University of Melbourne  
VIC 3010  
03 8344 4000

**Website**

unimelb.edu.au

**Campus Locations**

- Parkville
- Burnley
- Creswick
- Dookie
- Shepparton
- Southbank
- Werribee

The University of Melbourne is situated on the unceded lands of the Wurundjeri Woi Wurrung people, the Bunurong people, the Yorta Yorta people and the Dja Dja Wurrung people.

As a place of outstanding discovery and enquiry, our purpose is to benefit society through the transformative impact of education and research.

Our graduates are renowned for their knowledge, skills and societal influence as citizens and future leaders.

Our talented academics nurture ambition and lead discovery, understanding and impact through their research.

Students and scholars converge at the shifting borders of knowledge, addressing important questions and tackling problems.

The university's international community of alumni is united by knowledge and its connection to the City of Melbourne, our region and the world.

Diversity and inclusiveness enrich our vibrant community and make us who we are. Our students and staff bring with them different backgrounds, experiences and perspectives, and have equal access to opportunities to fulfil their talents and potential.

The scale and breadth of our cross-disciplinary curriculum and our collaborative research culture bring together diverse perspectives and expertise.

Across our campuses and precincts and through strong relationships with community, industry and government, we make contributions to our local communities, our nation and global society.

Great societal leaps forward have always had knowledge at their core. With diversity of thought and bold and creative thinking, knowledge transforms into ideas, innovations and solutions that make a difference.





**President and  
Vice-Chancellor**

Professor  
Margaret Gardner AC  
03 9902 9851  
margaret.gardner@  
monash.edu

**Chancellor**  
Mr Simon McKeon AO

**Contact Details**  
Monash University  
Clayton VIC 3800  
03 9902 6000

**Website**  
monash.edu

**Campus Locations**  
**Australian campuses**

- Caulfield
- Clayton
- Parkville
- Peninsula

**International locations**

- China
- India
- Indonesia
- Italy
- Malaysia

Monash University is a modern, global, research-intensive university, delivering education and research excellence in Australia and across the world.

We create lasting global change by collaborating with universities, governments and industry through innovation and enterprise to advance new ideas and translate exciting technologies. Our Strategic Plan, *Impact 2030*, charts the path towards realising our purpose through research and education to address the challenges of the age – climate change, geopolitical security and thriving communities – for the betterment of present and future generations.

Monash has four Australian campuses – Clayton, Caulfield, Parkville and Peninsula – on the lands of the Kulin Nations. We're committed to helping build a society that recognises, respects and includes Indigenous peoples, cultures and knowledge by working with and celebrating Aboriginal and Torres Strait Islander peoples, and Indigenous peoples of other places where Monash has a campus or major presence.

We also have campuses in Malaysia and Indonesia (the first foreign university ever established in both countries), campuses in partnership with universities (Indian Institute of Technology Bombay and Southeast University) in Mumbai, India, and Suzhou, China, and a major centre in Prato, Italy. This growing global network enriches our education and research, and nurtures deep, enduring relationships across the world.

Our global reputation for education and research excellence ranks us in the *world's top-50 universities* in the 2022-23 US News and World Report Best Global Universities Rankings (37th) and the 2023 Times Higher Education World University Rankings (44th). We are a founding member of Australia's Group of Eight, and a member of the Association of Pacific Rim Universities.



**Vice-Chancellor  
and President**

Professor Andrew J Deeks  
08 9360 6300  
vc@murdoch.edu.au

**Chancellor**  
Mr Gary Smith

**Contact Details**  
South Street  
Murdoch WA 6150  
08 9360 6000

**Website**  
murdoch.edu.au

**Campus Locations**

- Perth
- Mandurah
- Rockingham
- Dubai
- Singapore

Murdoch University has, from its foundation in 1974, been a university of difference.

Established as the second university in Western Australia, Murdoch has always been associated with environment and conservation, social justice and inclusion, and providing pathways into and through a university education for people who had previously been excluded.

While the challenges facing our species and our world are considerable, Murdoch is ideally placed to contribute to solutions, while enabling our students and staff to realise their potential.

This commitment also extends within, as we take action to achieve a truly sustainable campus, with targets for carbon neutrality across our operations, zero per cent waste to landfill, and a net zero transport plan by 2030.

Murdoch's flagship location in Perth is one of the largest urban campuses in Australia, boasting a working farm and a vast expanse of natural bushland teeming with unique wildlife.

At the heart of the campus is our new teaching building, Boola Katijin, a dynamic space that combines modern, sustainable design and digital technology, where students, teachers, and industry can learn, collaborate and socialise.

In Perth's southern corridor, Murdoch's Mandurah campus is home to popular nursing degrees taught in state-of-the-art simulation suites, and our Rockingham campus hosts our pro bono law clinic and some of our successful pathways and enabling programs. Our international campuses in Singapore and Dubai deliver a range of undergraduate and postgraduate courses from vibrant, state-of-the-art facilities.

Across the entire university, our shared purpose is to change lives and society for the better through accessible education and research, contributing to the solution of societal and environmental challenges and providing an inclusive, caring community in which everyone can realise their potential.





### Acting Vice-Chancellor

Professor Simon Evans  
02 6773 2004  
vc@une.edu.au

### Chancellor

Mr James Harris

### Contact Details

Elm Avenue  
Armidale NSW 2351  
02 6773 3333

### Website

une.edu.au

### Campus Locations

- Armidale
- Parramatta
- Tamworth

### Australia's oldest regional university

With a history dating back to the 1930s, the University of New England (UNE) is one of Australia's great multi-modal teaching, training and research universities.

In pioneering distance education, UNE has contributed to the nation's development for nearly 100 years, enriching the lives of many people who would otherwise have been unable to pursue university studies.

### Education – wherever you are

Approximately 80 per cent of UNE's students study online. With campuses in Armidale and Tamworth (under construction), nine regional study centres and a campus in western Sydney, students can tailor their learning experience to suit their personal and professional needs.

Students, including international students from over 70 nations, can also choose to enjoy a vibrant residential experience. Accommodation options range from traditional, catered colleges to independent apartment-style living.

### Unsurpassed quality

UNE has achieved the maximum five stars for overall student experience for the past 17 years; a feat unmatched by any other Australian public university. UNE is rated five stars in Australia for teaching quality and student support by Canstar Blue.

Students can choose from a range of courses in the arts, humanities, education, health, economics, business, law, medicine, social and behavioural sciences, sport and exercise, and environmental sciences. UNE's bespoke courses allow working adults to design a personalised degree program to suit their specific needs.

### Real-world research

UNE is internationally recognised for contributions to applied animal genetics and breeding, agriculture, law, social sciences, and health and medicine in a regional context. The UNE PhD (Innovation) program embeds practical research projects in industries and communities.



### Vice-Chancellor and President

Professor Attila Brungs  
02 9385 2855  
president@unsw.edu.au

### Chancellor

Mr David Gonski AC

### Contact Details

Kensington NSW 2052  
02 9385 1000  
Follow @unsw

### Website

unsw.edu.au

### Campus Locations

- Kensington
- Paddington
- Canberra at ADFA

UNSW Sydney is a powerhouse of cutting-edge research, teaching and innovation. We rank among the top 50 universities globally, with more than 65,000 students and a research community of over 6,000.

### Research for public good

At UNSW, we strive to honour our motto – Knowledge through heart, hand and mind. Pioneering research and sustained innovation are addressing some of the critical issues of today, from climate change and renewable energies, RNA research and lifesaving medical treatments through to informing policy and expert commentary in human rights, the constitutional recognition of Indigenous Australians and public health. UNSW placed equal fifth globally and first in Australia in the inaugural QS World University Sustainability Rankings 2023.

### Future-focused graduates

UNSW is dedicated to shaping forward-thinking graduates who make a positive impact. UNSW graduates are among the most employable in the world and have the third highest rate of graduate full-time employment in Australia. With a strong culture of entrepreneurship, UNSW's Founders accelerators program has supported more than 240 start-ups each year.

### Robust international networks

We are proud of our national and international networks, which support our belief that strength through collaboration will enable society to solve its greatest challenges. UNSW is a founding member of the Group of Eight, a coalition of Australia's leading research-intensive universities, and the prestigious Universitas21 international association.

The main UNSW campus is in Kensington, seven kilometres from the Sydney CBD. Other major campuses are the Art & Design campus in Paddington and UNSW Canberra at the Australian Defence Force Academy.



### **Vice-Chancellor and President**

Professor Alex Zelinsky AO  
02 4921 5101  
alex.zelinsky@newcastle.edu.au

### **Chancellor**

Mr Paul Jeans

### **Contact Details**

University Drive  
Callaghan NSW 2308  
02 4921 5000  
askuon@newcastle.edu.au

### **Website**

newcastle.edu.au

### **Campus Locations**

- Newcastle (Callaghan)
- Newcastle City
- Central Coast
- Port Macquarie
- Sydney
- Singapore

At the University of Newcastle, we are committed to being a world-leading university for our regions. We are ranked in the top 200 universities in the world and for more than 55 years we have been delivering superior education and undertaking world-class research to help improve the lives of our communities.

### **Outstanding student experiences**

Our vibrant campuses across Newcastle, the Central Coast, Sydney and Singapore provide spaces to learn, socialise and collaborate. These welcoming spaces are designed to inspire our more than 39,000 students and our staff to make a difference. We pride ourselves on offering an outstanding experience for our students and, regardless of their course, every student is encouraged to take up the opportunity to work with industry as part of their study – it means our graduates are not only job ready, but life ready.

### **A foundation of equity and excellence**

We believe that every student with drive and aspiration is supported to succeed at the University of Newcastle, regardless of background or circumstance. That's why we are proud that one in two of our undergraduate students are the first in their family to undertake tertiary education and why we are committed to creating pathways to university for Aboriginal and Torres Strait Islander students. This commitment is fundamental to how we teach and research, how we work with industry partners and local communities, and how we engage with our staff and students.

### **Better connected**

We are a globally-connected university that is committed to our region and ranked number one in Australia for industry collaboration. We know that a better tomorrow lies in our ability to find new solutions to some of the planet's greatest challenges and our students can feel confident they are receiving a world-class education from experts in their fields, no matter what their area of study.



### **Vice-Chancellor**

Professor Francis Campbell  
vc@nd.edu.au

### **Chancellor**

The Hon Chris Ellison

### **Contact Details**

#### **Fremantle**

32 Mouat St  
Fremantle WA 6959  
08 9433 0555  
fremantle.reception@nd.edu.au

#### **Sydney**

140 Broadway  
Chippendale NSW 2008  
02 8204 4400  
sydney@nd.edu.au

### **Website**

notredame.edu.au

### **Campus Locations**

- Fremantle
- Sydney
- Broome

The University of Notre Dame Australia is a national Catholic university with more than 12,000 students across its campuses in Fremantle and Broome, Western Australia, and Sydney, New South Wales. The university also has seven clinical schools located in regional NSW and Victoria.

The university's three faculties (the Faculty of Arts, Sciences, Law and Business, the Faculty of Education and Philosophy & Theology, and the Faculty of Medicine, Nursing, Midwifery and Health Sciences) offer undergraduate, postgraduate and research degrees.

The university provides excellent standards of teaching, scholarship, professional training, and research with established networks in healthcare, education, and social services. The university has developed a solid platform of research engagement across its six focus areas of ethics, philosophy, theology, Catholic education, health, and Indigenous studies, stemming from three principal research institutes: the Institute for Ethics & Society in Sydney, the Institute for Health Research in Fremantle, and the Nulungu Research Institute based in Broome.

The university aims to empower a new generation of ethical leaders and help prepare students to navigate the challenges of an ever-changing work environment by encouraging them to view the world from a new perspective. Critical thinking is at the core of each degree at Notre Dame, an approach that equips students for fulfilling lives, as well as successful careers.

In results from the Federal Government's Quality Indicators for Learning and Teaching surveys, Notre Dame is the number one university in Australia for overall employment of graduates (2021 Graduate Outcomes Survey – Longitudinal, undergraduate category).



**Vice-Chancellor  
and President**

Professor Deborah Terry AO  
07 3365 1300  
vc@uq.edu.au

**Chancellor**

Mr Peter N Varghese AO

**Contact Details**

St Lucia QLD 4072  
07 3365 1111  
ask@uq.edu.au

**Website**

uq.edu.au

**Campus Locations**

- St Lucia
- Gatton
- Herston

The University of Queensland (UQ) is one of Australia's leading teaching and research universities and is consistently ranked among the world's top 50 universities. In the 2022 Aggregate Ranking of Top Universities, UQ ranked 2nd in Australia and 42nd in the world.

UQ's main campus is located in Brisbane, host city of the 2032 Olympic and Paralympic Games.

**Teaching**

UQ has won more national teaching awards than any other Australian university, including Australian University Teacher of the Year several times.

More than 55,000 students – including 21,000 international from 137 countries and 20,000 postgraduate students – study with UQ. Students can choose from more than 3,700 courses, with 30% including work integrated learning opportunities. Through our engaged alumni and industry partnerships, our students also have the opportunity to build networks and access internships.

**Research**

UQ has more than 2,000 academics and researchers and around 3,600 active research projects, seeking solutions to the world's biggest challenges and opportunities.

Our researchers are the leading recipients of Australian Research Council fellowships and awards nationally. In 2022, UQ had the highest number of Highly Cited Researcher Awards of any Australian university.

UQ is the leader of research commercialisation in Australasia and the leading university in Australia for active startups.

**Community**

UQ has a global community of 311,000 alumni from 170 countries and 450+ partners across the globe. This strong global network is key to our commitment of delivering for the public good through excellence in education, research and engagement with our communities – both locally and globally.



**Vice-Chancellor  
and President**

Professor Margaret Sheil AO  
07 3138 8086  
vc@qut.edu.au

**Chancellor**

Ms Ann Sherry AO  
07 3138 4056  
qutchancellor@qut.edu.au

**Contact Details**

2 George Street  
Brisbane QLD 4000  
07 3138 2000  
askqut@qut.edu.au

**Website**

qut.edu.au

**Campus Locations**

**Brisbane:**

- Gardens Point
- Kelvin Grove

QUT is a major Australian university with a global reputation and a 'real world' focus. Our courses equip our students and graduates with the skills and mindset they need to realise their full potential in a rapidly changing world.

We are an ambitious institution, with a growing research output focused on technology and innovation. QUT ranks in the world's top 200 universities.

Our strategy establishes QUT as 'the university for the real world' and charts our provision of transformative education and research that is relevant to our communities.

With more than 50,000 students across two inner-city campuses in Brisbane, QUT offers academic programs in fields spanning business, creative industries, education, engineering, health, law, science, and social justice across five faculties.

We are transforming the learning experience, embedding work-integrated learning and focusing on developing entrepreneurial skills. We offer executive education and professional development through QUTeX, flexible learning through QUT Online, and pathways into our undergraduate programs through QUT College.

QUT is well-known for our strong links to industry and government, and our inter-disciplinary teams create high-impact research in areas as diverse as climate change mitigation, digital media, materials science, and biomedical innovation.

QUT is committed to embedding Indigenous Australian cultures, knowledges, and perspectives across everything we do, and through our Campus to Country strategy we are in the process of transforming our campuses to reflect the past and present culture of Indigenous Australians.





**Vice-Chancellor  
and President**

Professor Alec Cameron  
03 9925 1999  
vc@rmit.edu.au

**Chancellor**

Ms Peggy O'Neal AO

**Contact Details**

124 La Trobe Street  
Melbourne VIC 3000  
03 9925 2000  
rmit.edu.au/contact

**Website**

rmit.edu.au

**Campus Locations**

- Melbourne City
- Bundoora
- Brunswick
- Ho Chi Minh City
- Hanoi

RMIT is an international university of technology, design and enterprise with more than 96,000 students and close to 10,000 staff globally. We empower people and communities to adapt and thrive across generations, with education, research and civic engagement that are applied, inclusive and impactful.

Three substantial campuses in Melbourne are located in the City, Brunswick and Bundoora, along with other Victorian locations. We also have two campuses and a language centre in Vietnam and a research and industry collaboration centre in Barcelona, Spain. In addition, programs are offered through partners in Singapore, Hong Kong, Sri Lanka and mainland China, with research and industry partnerships on every continent.

Strong industry connections forged over 135 years remain integral to RMIT's leadership in education, applied and innovative research. RMIT is ranked 190th in the 2023 QS World University Rankings, 209th in the 2023 US News Best Global Universities Rankings and is in the world's top 400 in the Academic Ranking of World Universities (ARWU). RMIT also ranked 22nd in the 2023 Times Higher Education (THE) World University Rankings, 22nd in the 2022 THE Impact Ranking and =53rd globally in the QS Sustainability Rankings.

Core to our reputation is educating highly employable graduates and global citizens, ready to contribute in complex times. Our diverse global community of over 480,000+ graduates, live and work in more than 150 countries around the world. We are committed to lifelong education and welcome our alumni back throughout their careers to top-up their skills or change their direction all together.

At every stage, we continue to work respectfully with, and learn from, the history, knowledge and experience of Australia's First Nations Peoples. This is woven through all that we do.

For more information, visit [rmit.edu.au/about](https://rmit.edu.au/about).



**Vice-Chancellor  
and President**

Professor David Lloyd  
08 8302 0500  
david.lloyd@unisa.edu.au

**Chancellor**

Ms Pauline Carr

**Contact Details**

GPO Box 2471,  
Adelaide SA 5001  
08 8302 6611

**Website**

unisa.edu.au

**Campus Locations**

- City East
- City West
- Magill
- Mawson Lakes
- Whyalla
- Mount Gambier

The University of South Australia (UniSA) is a place for unstoppable people. We're one of the world's best young universities, living on the educational and entrepreneurial edge.

UniSA is a gateway to great minds. We're South Australia's largest university – home to thousands of students, staff and researchers all in the pursuit of excellence – for new, for next.

We're preparing tomorrow's professionals, today. Our teachers are thought makers and our degrees are designed with industry. We offer programs across in-demand and emerging areas, including health, education, digital business, engineering, information technology, visual effects, aged care and creative industries. Our students are highly adaptable to the changing global landscape; and our graduates get the jobs.

We collaborate with more than 2,500 companies worldwide, bringing together a connected culture of innovation. We partner with end-users to shape the questions we ask – and they're big questions – producing world-class research with real impact.

Our contribution goes beyond the University's walls. We act on our social mission to enrich the communities we serve through meaningful connection. UniSA is home to MOD. (Australia's first futuristic museum of discovery), The Samstag Museum of Art, SASA Gallery, Architecture Museum, Community Clinics, and The Bob Hawke Prime Ministerial Centre. We're celebrating art and science, supporting healthcare, shaping business, and taking the lead on new thinking and building a more inclusive society.

*We're Australia's University of Enterprise.*





**Vice-Chancellor  
and President**

Professor Tyrone Carlin  
02 6620 3703  
ovc@scu.edu.au

**Chancellor**

Ms Sandra McPhee AM

**Contact Details**

Military Road  
Lismore NSW 2480  
02 6620 3000

**Website**

scu.edu.au

**Campus Locations**

- Lismore
- Coffs Harbour
- Gold Coast

At Southern Cross University, we are driven by a clear purpose: to change lives through revolutionary learning and research with real impact.

Our game-changing Southern Cross Model is focused on deeper, more immersive learning and increased student success. The Model is an integral part of our diverse academic portfolio, with courses in Business, Creative Arts, Education, Engineering, Health, Humanities, Indigenous Knowledge, Information Technology, Law, Science, Social Work and Tourism.

The University is world-ranked, with outstanding facilities located in stunning natural environments. Established in 1994, Southern Cross University now boasts three main campuses at Lismore, the Gold Coast and Coffs Harbour and the National Marine Science Centre in Charlesworth Bay, Coffs Harbour.

A unique partnership with Mulpha Australia enables study at The Hotel School in Sydney, Melbourne, Brisbane and on Hayman Island. Branch campuses also operate in Sydney, Melbourne and Perth in partnership with EduCo, and at the Coomera Creative Campus in partnership with TAFE Queensland. Our graduates number more than 75,000 people who live and work in more than 100 locations around the world.

We were the first university in Australia to introduce a degree in tourism and a Naturopathy Clinic on a university campus. We continue to break new ground with world-leading research activity in fields like coral reproduction, biogeochemistry and agriculture, producing knowledge that has an impact not just in the regions where the university is located, but all over the world. Together, we are Transforming Tomorrow.



**Vice-Chancellor**

Professor  
Geraldine Mackenzie  
07 4631 2168  
vc@usq.edu.au

**Chancellor**

Mr John Dornbusch

**Contact Details**

West Street  
Toowoomba QLD 4350  
07 4631 2100

**Website**

usq.edu.au

**Campus Locations**

- Toowoomba
- Springfield
- Ipswich

The University of Southern Queensland is where students, researchers, community, and partners access excellence. We are home to some of the most vibrant hubs of education and research innovation in the world.

At the University of Southern Queensland, we've led the nation as the number one university for graduate starting salary for three years running (Graduate Outcomes Survey).

We offer a supportive environment and student-focused commitment to learning and teaching, providing education worldwide from – Toowoomba, Springfield and Ipswich – with an extensive online presence.

By offering a mix of open and flexible programs in business, education, law, arts, health, engineering, surveying, agriculture, and sciences (including paramedicine and aviation), the University of Southern Queensland meets the educational needs of students, industries, and communities all over the world.

The university's research is a catalyst for industry growth, community prosperity and wellbeing through focussed, high-quality research and research training. Researchers work directly with local communities, industry, and international partners to form strong and enduring partnerships that deliver tangible benefits and real impact.

The University of Southern Queensland's world-class research institutes, centres, and faculties are home to unique state-of-the-art facilities (like the Mount Kent Observatory, Queensland's only professional astronomical research facility), enabling our researchers to deliver a broad range of research outcomes across multiple disciplines. Our research services industry needs in a number of flagship areas, including space and defence, agriculture, health, and regional development.

We're committed to solving problems that matter, with local solutions to global challenges, where our researchers are leading the way in next-generation innovation and inspiring students who are future-focused.



#### **Vice-Chancellor and President**

Professor Helen Bartlett  
07 5430 1101  
vcp@usc.edu.au

#### **Chancellor**

Sir Angus Houston  
AK, AFC (Ret'd)

#### **Contact Details**

90 Sippy Downs Drive  
Sippy Downs QLD 4556  
07 5430 1234  
information@usc.edu.au

#### **Website**

usc.edu.au

#### **Campus Locations**

- Sunshine Coast
- Moreton Bay
- Fraser Coast
- Gympie
- Caboolture

The University of the Sunshine Coast (UniSC) is a young, ambitious university driven by the unwavering belief that community and culture is just as important as a world-class education.

Being young means we're not limited to the way things have always been done. We prefer thinking that moves everyone forward. Which is why we've grown exponentially since 1996 into a comprehensive university that is a global leader in sustainability, with award-winning facilities spanning five campuses along the South East coast of Queensland.

Our regional footprint allows us to remove barriers to education for thousands of first-in-family and mature age students, who no longer have to leave home to achieve their education and career goals.

And once they're at UniSC, our students find layers of support within a community of people all working towards the shared goal of seeing them succeed. We are ranked one of the best universities in Australia for teaching quality – a title we've held for 17 consecutive years. Our students graduate work-ready through hands-on learning across the more than 120 programs offered at our network of teaching locations.

We're the world's only university operating within three UNESCO Biosphere Reserves and a UNESCO World Heritage Site, which grants us a unique opportunity to capitalise on the wealth of significant environmental treasures around us, and continuously work to champion sustainability.

In the 2022 Times Higher Education (THE) Impact Rankings, UniSC is the top ranked Queensland university for 'Overall Impact,' and in the top three per cent globally for 'Climate Action.'

We have 26 research fields ranked at - or well above - world standard (Excellence in Research for Australia). And we're focused on becoming Australia's premier regional university, meaning our research explores the biggest challenges of our time, those with the most significance for the future. Since 2013, we have more than tripled our annual research income, and this is just the start of our story.



#### **Vice-Chancellor and President**

Professor Pascale Quester  
03 9214 8163  
vc@swin.edu.au

#### **Chancellor**

Mr John Pollaers OAM

#### **Contact Details**

John Street  
Hawthorn VIC 3122  
03 9214 8000

#### **Website**

swinburne.edu.au

#### **Campus Locations**

- Hawthorn
- Croydon
- Wantirna
- Sarawak, Malaysia

Swinburne University of Technology is a dual-sector institution, defined and inspired by technology and innovation, and renowned for strong industry and community engagement.

With a vision of people and technology working together to build a better world, our people are driven by a shared purpose: to create tomorrow's technology and the human capital and talent required for a digital, tech-rich future.

We are building Swinburne as the prototype of a new and different university – one that is truly of technology, innovation and entrepreneurship. Our researchers are collaborating with industry, communities and government to co-create the technology solutions our world needs.

Swinburne is ranked in the top one per cent of universities worldwide, as well as in the top 50 young universities under 50 years old in prestigious global rankings. We have an esteemed reputation for world-leading research in astronomy, physics, engineering, materials science, computer science and information technology, design and innovation, health sciences, neurosciences and mental health.

As part of our Horizon 2025 strategic plan, we are injecting significant research investment into three flagship areas: Space and Aerospace Technology; Innovative Planet: smart solutions for sustainability; and Medical Technology.

In Australia, Swinburne has three Melbourne campuses offering tertiary education for Higher Education and Vocational Education and Training. Our Sydney campus offers postgraduate courses in information technology as well as construction and infrastructure management. Internationally, Swinburne has a campus in Sarawak, Malaysia, and locations in Vietnam and China. Swinburne is also a leader in online learning through Swinburne Online and Open Universities Australia.



**Vice-Chancellor  
and Principal**

Professor Mark Scott AO  
02 9351 6980  
vice.chancellor@  
sydney.edu.au

**Chancellor**

Belinda Hutchinson AC

**Contact Details**

The University of Sydney  
Sydney NSW 2006  
1800 SYD UNI  
(1800 793 864)

**Website**

sydney.edu.au

**Campus Locations**

- Camperdown/Darlington
- Camden
- Surry Hills
- Mallett Street
- Westmead
- Sydney Medical School  
campuses and teaching  
hospitals
- Sydney CBD
- Sydney Conservatorium  
of Music
- One Tree Island  
Research Station

As Australia's first university, the University of Sydney has a proud history of global leadership in education and research, inspiring people from all backgrounds to contribute to positive real-world change. Our rankings reflect our sustained record of excellence and global reputation – regularly ranked in the top 50 universities worldwide.

We offer a range of disciplines – more than 400 areas of study – and our community includes more than 70,000 students, 8,000 permanent and fixed-term staff and over 380,000 alumni in more than 170 countries. We engage with partners across all industries and government to answer the biggest questions facing society, business and our communities worldwide.

**Reimagining education**

Our undergraduate curriculum allows students to choose their way to learn, gain hands-on experience and be workplace-ready. Our postgraduate courses enable students to advance their careers, pursue a passion and gain a higher qualification.

**Student Experience**

We offer our students opportunities for enriched social interactions through more than 200 clubs and societies. Students benefit from access to sporting and performance facilities, museums, galleries and study spaces.

**Research with impact**

Our research is driven by a desire to make a positive impact. We find solutions to the world's biggest problems by questioning assumptions and thinking differently.

Our researchers combine expertise from many disciplines. We've invested heavily in interdisciplinary research, in areas including obesity, diabetes and cardiovascular disease; inequality; nanoscience; mental health and brain science, and deepening understanding of Southeast Asia and China. We're a world-renowned research institution, with 100% of our research ranked at world standard or above by the Australian Government's Excellence in Research for Australia report.



**Vice-Chancellor  
and President**

Professor Rufus Black  
03 6226 2002  
vice.chancellor@utas.edu.au

**Chancellor**

Alison Watkins AM

**Contact Details**

Churchill Avenue  
Sandy Bay TAS 7005  
03 6226 2999

**Website**

utas.edu.au

**Campus Locations**

- Hobart
- Cradle Coast
- Launceston
- Sydney

**A university for Tasmania, from Tasmania.**

Our mission is to improve the lives of Tasmanians and care for our island home. But we also look outward to help meet the world's challenges from our unique vantage point here in Tasmania.

The Aboriginal people of lutruwita/Tasmania stewarded the island sustainably for tens of thousands of years and we seek to build a future together with them. Our aim is to see Tasmania become a model for a more sustainable world.

**Our difference**

Home to both pristine wilderness and vibrant cities, Tasmania is a very special place. Our island informs our teaching, our research, and our unique ways of thinking. We have a distinctive culture that produces thinkers, writers, artists, and musicians, whose influence is felt around the globe.

Our location also gives us unique research strengths with access to extraordinary wilderness on land, at sea and in the Antarctic, and with some of the finest agricultural land and most diverse geologies in the world. With a proud maritime heritage, we continue to train the nation's seafarers and design the next generation of vessels for above and below the seas. Having an unrivalled vantage of the Southern skies, we do unique work in astronomy and astrophysics.

**Our students**

At the University of Tasmania, we commit to making our students more than a number, and the island our campus. Through our dedicated teaching staff and class sizes, everyone gets the support they need to thrive. We also offer scholarships and pathways to nurture each individual learning journey.





### **Vice-Chancellor and President**

Professor Andrew Parfitt  
02 9514 1333  
andrew.parfitt@uts.edu.au

### **Chancellor**

Ms Catherine Livingstone AO

### **Contact Details**

15 Broadway  
Ultimo NSW 2007  
02 9514 2000

### **Website**

uts.edu.au

### **Campus Locations**

- Sydney CBD

The University of Technology Sydney (UTS) is a vibrant young global university located in a vibrant young global city.

The university is considered among the top 200 universities in the world by both the QS (137th) and Times Higher Education (133rd) global rankings.

UTS is widely known for its innovative learning and teaching approach, which integrates the best of online and face-to-face experiences. Students benefit from an immersive career-focused education, coupled with strong links to industry. They're prepared for tomorrow, in a way which is relevant today.

The university's inner-city campus has recently been transformed through a \$1.5 billion investment, which has delivered four award-winning buildings, including internationally-renowned architect Frank Gehry's first Australian venture.

Imbued with collaborative spaces and technological capabilities, the distinctive campus is a physical embodiment of UTS' progressive traits.

UTS research spans a range of disciplines, including health, data sciences, sustainability, applied economics, social futures, robotics, civil engineering, future work, microbiology, and quantum computation. One hundred per cent of UTS' broad fields of research are benchmarked by the Australian Government at world standard or above, while almost 80 per cent of UTS research is assessed at having a 'high' impact beyond the academic – the highest proportion in the country.

Above all, UTS believes in the value of real-world experience and innovation for its students, and making a positive impact on the world around it.



### **Vice-Chancellor and President**

Professor Adam Shoemaker  
03 9919 4011  
vice-chancellor@vu.edu.au

### **Chancellor**

The Hon Steve Bracks AC

### **Contact Details**

Ballarat Road  
Footscray, VIC 3011  
03 9919 4000

### **Website**

vu.edu.au

### **Campus locations**

- City Campus
- Footscray Nicholson
- Footscray Park
- St Albans
- Sunshine
- Werribee
- Sydney
- Brisbane
- Online



Victoria University (VU) has offered accessible, world-class education to students in Melbourne's west and beyond for more than a century. VU ranked in the top three per cent of universities in the Times Higher Education (THE) World University Rankings 2023 and top six per cent in the THE Impact Rankings 2022. It was also named Australia's number one university for employability skills in 2020 and 2021.

### **Doing dual differently**

In 2018, VU introduced the revolutionary VU Block Model of teaching and learning, an Australian first. It enables students to study one subject at a time over four weeks in smaller classes, allowing more one-on-one time with lecturers and greater immersion in each subject. Results show increased pass rates and grades.

As one of only six Australian dual sector universities, VU offers flexible, concurrent, and complementary studies – bringing together TAFE, through Victoria University Polytechnic, and Higher Education.

### **Research with impact**

The development and sustained application of ethical knowledge in all its forms is key to VU's research with impact mandate. Done in partnership and collaboration, researchers address the challenges of people, place and planet. VU's strengths lie in sport, health and active living, and sustainable industries and liveable cities.

### **Industry-leading partners**

Ethical partnering is at the core of what VU does. Strong alliances with regional organisations like Western Health and the Western Bulldogs and partnerships with more than 4,000 organisations are integral in shaping VU's teaching. They provide industry immersed learning experiences and research collaboration to benefit the region and local communities.

### **A place of opportunity and diversity**

VU are champions of progressive inclusivity, with more than 40,000 students from over 90 countries studying onshore and 5,400 studying at the university's international partner institutions. Proudly, 51 per cent of students are first-generation - at VU, education comes with opportunity and success.





#### **Vice-Chancellor**

##### **Professor Amit Chakma**

08 6488 2801  
vice-chancellor@uwa.edu.au

#### **Chancellor**

The Hon Robert French AC

#### **Contact Details**

Stirling Highway  
Perth WA 6009  
08 6488 6000

#### **Website**

uwa.edu.au

#### **Campus Locations**

- Crawley
- Nedlands
- Claremont
- Albany

Since 1911, The University of Western Australia (UWA) has blazed a trail in producing remarkable and life-changing contributions across learning, teaching and research.

Our industry connections, innovative courses, commitment to student experience and high-impact research place UWA as the only World Top 100 university (QS 2023) in WA.

On the banks of the Swan River and the land of the Whadjuk Noongar, our main Crawley campus is home to over 25,000 students, with more than 4,000 international students hailing from 100 countries.

#### **The workforce of the future**

Ranked first in WA for graduate employability (QS Graduate Employability Ranking 2022), UWA produces highly employable graduates who forge long and successful careers. Working with industry partners on real challenges, and taking on networking opportunities, work placements and internships, our students gain the skills, knowledge and connections to kick start their career.

#### **World-class research**

Our researchers partner with industry and communities to tackle some of the world's most complex problems. We have key strengths in mining engineering, marine and ocean engineering, environmental science, biological science and agricultural science. As a member of the Group of Eight and the Matariki Network of Universities, UWA is globally recognised as a leading research-intensive university, contributing to the world's intellectual, cultural and economic development.

#### **Serving our community**

Through our students, research and partnerships, we're improving the lives of those in our communities. Our vibrant campus is an arts and culture hub and our partnerships with WA sporting organisations reflect our commitment to promote elite men's, women's and grassroots sport in WA.

## **WESTERN SYDNEY UNIVERSITY**



#### **Vice-Chancellor and President**

Professor Barney Glover AO  
02 9683 8121  
b.glover@  
westernsydney.edu.au

#### **Chancellor**

Professor Jennifer Westacott AO

#### **Contact Details**

Locked Bag 1797  
Penrith NSW 2751  
02 9852 5222

#### **Website**

westernsydney.edu.au

#### **Campus Locations**

- Bankstown City
- Bankstown
- Campbelltown
- Hawkesbury
- Liverpool
- Nirimba (Blacktown)
- Parramatta (Rydalmere)
- Parramatta City
- Penrith
- Sydney City
- Sydney Olympic Park
- Westmead

Western Sydney University is student-focused and research-led, located in Australia's fastest growing, most economically significant region – Greater Western Sydney.

With campuses throughout Australia's global city, we have more than 50,000 students and a cohort, both locally and globally, of more than 200,000 alumni.

#### **Ranked number one in the world**

We are delighted to be ranked the world's best in the 2022 Times Higher Education (THE) University Impact Rankings.

Western Sydney University topped the list out of more than 1,400 institutions for our work tackling issues like sustainability, climate action, equality, inclusivity and social justice.

More than 85 per cent of our research is also rated 'World standard or above' in the Excellence in Research for Australia (ERA) evaluation.

#### **Future focused teaching and learning**

We ensure our students – 65 per cent of whom are the first in their family to attend university – enjoy the best learning experience possible.

We put students at the heart of everything we do. Our innovative teaching and learning brings students, staff and external partners together to co-create courses that prepare students for employment success in the 21st century.

#### **Community**

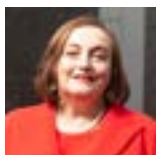
Our Western Growth strategy is co-creating transformative educational infrastructure in partnership with industry, government and higher education providers.

With world-class vertical campuses in Western Sydney growth centres – Parramatta, Westmead and Liverpool – we will soon open a high-rise campus in Bankstown CBD.

These campuses offer technology-rich teaching and research spaces, collaboration with industry, and embed the university in the economic and civic life of the Western Sydney region.



UNIVERSITY  
OF WOLLONGONG  
AUSTRALIA



### **Vice-Chancellor and President**

Professor  
Patricia M. Davidson  
02 4221 3909  
vc-office@uow.edu.au

### **Chancellor**

Ms Christine McLoughlin AM

### **Contact Details**

Northfields Avenue  
Wollongong NSW 2522  
02 4221 3555

### **Website**

uow.edu.au

### **Campus Locations**

- Wollongong
- Innovation Campus
- Batemans Bay
- Bega
- Shoalhaven
- South Western Sydney  
(Liverpool)
- Southern Highlands
- Southern Sydney  
(Loftus, Sutherland Shire)
- Sydney (CBD)
- Dubai
- Hong Kong
- Malaysia

At the University of Wollongong (UOW), we're proud to be among the best modern universities in the world. We're ranked in the world's top 200 universities and equal 70th for social and economic impact in the global THE Impact rankings, which benchmarks universities against the United Nations Sustainable Development Goals.

Our graduates are ethical, mobile, technologically literate, and the most employable in Australia, as recently highlighted in The Australian Government's Quality Indicators for Learning and Teaching (QILT) Employer Satisfaction Survey, which UOW rated highest for the employability of its graduates.

Our vision is to inspire a better future through education, research and partnership. Three goals drive us towards our purpose; empowering students for their future, creating knowledge for a better world and making a difference for our communities.

UOW has a strong international focus and reputation, delivering world-class teaching to approximately 7,000 students globally, including at our campuses in the United Arab Emirates, Hong Kong and Malaysia, and teaching locations in China and Singapore. In 2023, UOW in Dubai celebrates 30 years since establishment. In January 2022, it opened the doors to a new, 200,000 square-foot 'campus of the future' in Dubai's Knowledge Park.

UOW's newest research facility, Molecular Horizons, is at the forefront of scientific discovery, unlocking the innermost secrets of the living cell and developing new ways to detect and attack disease. Molecular Horizons is dedicated to illuminating how life works at a molecular level and solving some of the world's biggest health challenges.

